

Shellharbour Public School



Newsletter - Term 3, Week 3

Website: www.shellharb-p.schools.nsw.edu.au

Phone: 4295 1334

Email: shellharb-p.school@det.nsw.edu.au

Fax: 4297 2399

Upcoming Events

Monday 5th August

Drumming for Stage 3 students

Monday 5-9th August

Book Fair in the Library

Wednesday 7th August

Book Character Parade K-2

Open Day

Thursday 8th August

Yr 3 Mt Keira Excursion

Monday 12th and Tuesday 13th August

Stage Three Excursion to Canberra & the snow

Wednesday 14th and Thursday 15th August

**District Athletics
Carnival**

WELCOME BACK

Welcome back to Term 3. I would just like to take the opportunity to thank all of the staff and the community for your kind words of support. Your partnership is invaluable and truly appreciated. Mr MacDonald will be very much missed by the students, staff and the community. Thanks to his hard work and dedication, Mr MacDonald has left behind a wonderful school and he has left enormous shoes to fill. I will do my best to uphold the aspects of our school that the parents and community hold dear.



KINDER 2020

We are now taking enrolments for Kindergarten 2020. If you plan to send your child to this school in 2020, it is important that we know this as soon as possible. Please call into the school office and get enrolment forms. Alternatively, if you know someone who wants to send their child to this school in 2020, please pass on this message. The process for enrolling a child in a school, (particularly your first one) can be confusing. If you know someone in this position, please ask them to call the school and we will be only too happy to help.

SCHOOL ATTENDANCE

School attendance is important. Towards the end of this newsletter are two information sheets provided by the Department. One of the points made on these sheets is the startling fact that just 8 missed days per term results in the loss of an entire year over the course of primary school. The sheets also point out your rights and responsibilities around school attendance and support available if you are having trouble getting your child to school. It is critical that if your child is absent from school that a valid reason for absence is provided as soon as possible. This can be completed in a number of ways either through the School Bag APP, or a written note that is passed onto your child's teacher.

WORLD'S GREATEST SHAVE

One of our students Rhyli is being brave and shaving as part of the World's Greatest Shave. Rhyli has been growing his hair for the past 3 years. Every donation Rhyli receives gives hope that the researchers will get one step closer to a cure. Every penny can make a difference.

Rhyli will be shaving on the **3/8/2019** and will be donating his hair to the leukaemia foundation. Rhyli is so excited that he is able to raise money for this great cause and can make a difference. For this to happen, Rhyli needs the support of the community. If you are able to donate there is a link provided below or there will be a donation box that is placed in the school office. Donations are able to be made up until the end of August.

<https://secure.leukaemiafoundation.org.au/registant/FundraisingPage.aspx?EventID=15414&LangPref=en-CA&RegistrationID=762170#&panel1-1>



NSW PSSA TOUCH KNOCKOUT



Our Stage 3 girls Touch team beat Oak Flats 3-1 in the NSW PSSA Touch Knockout competition. We now move onto the third round where we will be versing Albion Park Public School.

EDUCATION WEEK

Wednesday the 7th of August will be our celebration for education week. This year it will include:

K-2 Book Character Parade Wednesday, 7 August

Under the COLA next to the school hall at 9.15am. K-2 students and teachers will dress as their favourite book character and parade.

o 3-6 Book Character Dress Up Day Wednesday, 7 August

3-6 students can come to school dressed as their favourite character from a children's book and bring in the book their character is from.

o Kinder to Year 2 Open Classrooms Wednesday, 7 August

Opportunities to see your child's classroom and have them walk you through their efforts to date. Kinder to Yr 2 classrooms will be open from 10 am to 11am. Normal classes resume after lunch.

o K-6 Whole School Picnic Wednesday, 7 August

Parents and carers are invited to a picnic lunch at 11am on our back playground. Lunch can be pre-ordered from the canteen using the forms attached and/or a picnic lunch and blanket can be bought from home or sent with your child.

o Year 3 to Year 4 Open Classrooms Wednesday, 7 August

Opportunities to see your child's classroom, as well as join them in a STEM activity. Yr 3 to Yr 4 classrooms will be open from 11.40 am to 12.30pm. Normal classes resume after this.

o Year 5 to Year 6 Open Classrooms Wednesday, 7 August

Opportunities to see your child's classroom, as well as join them in a STEM activity. Yr 5 to Yr 6 (4/5T included) classrooms will be open from 12.30 pm to 1.20pm. Normal classes resume after recess.

BOOK CHARACTER PARADE

As part of celebrations for Education Week 2019, Shellharbour Public School will be holding a Book Character Parade on **Wednesday 7th August 2019**. Students are invited to come to school dressed as their favourite book character. Students will also need to bring the book their character is from to carry with them as K-2 student's parade- many titles can be borrowed from our library if you do not have them at home. The theme for Book Week 2019 is "Reading is my Secret Power" which may help to provide some inspiration for costumes. We look forward to seeing the students in their wonderful costumes.

NEXT P & C MEETING

The next P & C meeting will be held on Wednesday, 14 August 2019, starting at 6.30 pm in the staffroom. All welcome to attend!





Compulsory School Attendance

Information for parents

Education for your child is important and regular attendance at school is essential for your child to achieve their educational best and increase their career and life options. NSW public schools work in partnership with parents to encourage and support regular attendance of children and young people. When your child attends school every day, learning becomes easier and your child will build and maintain friendships with other children.

What are my legal responsibilities?

Education in New South Wales is compulsory for all children between the ages of six years and below the minimum school leaving age. The *Education Act 1990* requires that parents ensure their children of compulsory school age are enrolled at, and regularly attend school, or, are registered with the Board of Studies, Teaching and Educational Standards for homeschooling.

Once enrolled, children are required to attend school each day it is open for students.

The importance of arriving on time

Arriving at school and class on time:

- Ensures that students do not miss out on important learning activities scheduled early in the day
- Helps students learn the importance of punctuality and routine
- Give students time to greet their friends before class
- Reduces classroom disruption

Lateness is recorded as a partial absence and must be explained by parents.

What if my child has to be away from school?

On occasion, your child may need to be absent from school. Justified reasons for student absences may include:

- being sick, or having an infectious disease
- having an unavoidable medical appointment
- being required to attend a recognised religious holiday
- exceptional or urgent family circumstance (e.g. attending a funeral)

Following an absence from school you must ensure that within 7 days you provide your child's school with a verbal or written explanation for the absence. However, if the school has not received an explanation from you within 2 days, the school may contact you to discuss the absence.

Principals may decline to accept an explanation that you have provided if they do not believe the absence is in the best interest of your child. In these circumstances your child's absence would be recorded as unjustified. When this happens the principal will discuss their decision with you and the reasons why.

Principals may request medical certificates or other documentation when frequent or long term absences are explained as being due to illness. Principals may also seek parental permission to speak with medical specialists to obtain information to collaboratively develop a health care plan to support your child. If the request is denied, the principal can record the absences as unjustified.

Travel

Families are encouraged to travel during school holidays. If travel during school term is necessary, discuss this with your child's school principal. An *Application for Extended Leave* may need to be completed. Absences relating to travel will be marked as leave on the roll and therefore contribute to your child's total absences for the year.

In some circumstances students may be eligible to enrol in distance education for travel periods over 50 school days. This should be discussed with your child's school principal.





My child won't go to school. What should I do?

You should contact the principal as soon as possible to discuss the issue and ask for help. Strategies to help improve attendance may include a referral to the school's learning and support team or linking your child with appropriate support networks. The principal may seek further support from the Home School Liaison Program to develop an Attendance Improvement Plan.

What might happen if my child continues to have unacceptable absences?

It is important to understand that the Department of Education and Communities may be required to take further action where children of compulsory school age have recurring numbers of unexplained or unjustified absences from school.

Some of the following actions may be undertaken:

- Compulsory Schooling Conferences

You may be asked, along with your child, to attend a Compulsory Schooling Conference. The conference will help to identify the supports your child may need to have in place so they attend school regularly. The school, parents and agencies will work together to develop an agreed plan (known as Undertakings) to support your child's attendance at school.

- Application to the Children's Court – Compulsory Schooling Order

If your child's attendance at school remains unsatisfactory the Department

may apply to the Children's Court for a *Compulsory Schooling Order*. The Children's Court magistrate may order a Compulsory Schooling Conference to be convened.

- Prosecution in the Local Court

School and Department staff remain committed to working in partnership with you to address the issues which are preventing your child's full participation at school. In circumstances where a breach of compulsory schooling orders occurs further action may be taken against a parent in the Local Court. The result of court action can be the imposition of a community service order or a fine.

What age can my child leave school?

All New South Wales students must complete Year 10 or its equivalent. After Year 10, and up until they reach 17 years of age, there are a range of flexible options for students to [complete their schooling](#).

Working in Partnership

The Department of Education and Communities recognises that working collaboratively with students and their families is the best way to support the regular attendance of students at school.

We look forward to working in partnership with you to support your child to fulfil their life opportunities.

If a student misses as little as 8 days in a school term, by the end of primary school they'll have missed over a year of school.

Further information regarding school attendance can be obtained from the following websites:

Policy, information and brochures:

<http://www.schools.nsw.edu.au/studentsupport/programs/attendance.php>

The school leaving age:

<http://www.schools.nsw.edu.au/leaving-school/index.php>

Do you need an interpreter?

Interpreting services are available on request, including for the hearing impaired. The Telephone Interpreter Service is available 24 hours a day, seven days a week on 131 450. You will not be charged for this service.

For further advice and questions contact your educational services team

T 131 536

Learning and Engagement

Student Engagement & Interagency Partnerships

T 9244 5129

www.dec.nsw.gov.au

© February 2015

NSW Department of Education and Communities

PRESENTATION ASSEMBLY AWARD WINNERS

We congratulate the following students who received awards at our Presentation Assembly held on Thursday, 1 August 2019:

BANNERS

Bibish Psaras

PENNANTS

Eli Shaw

Harlie Bruce

Mia Jovanovski

Bibish Psaras

Samuel Graham

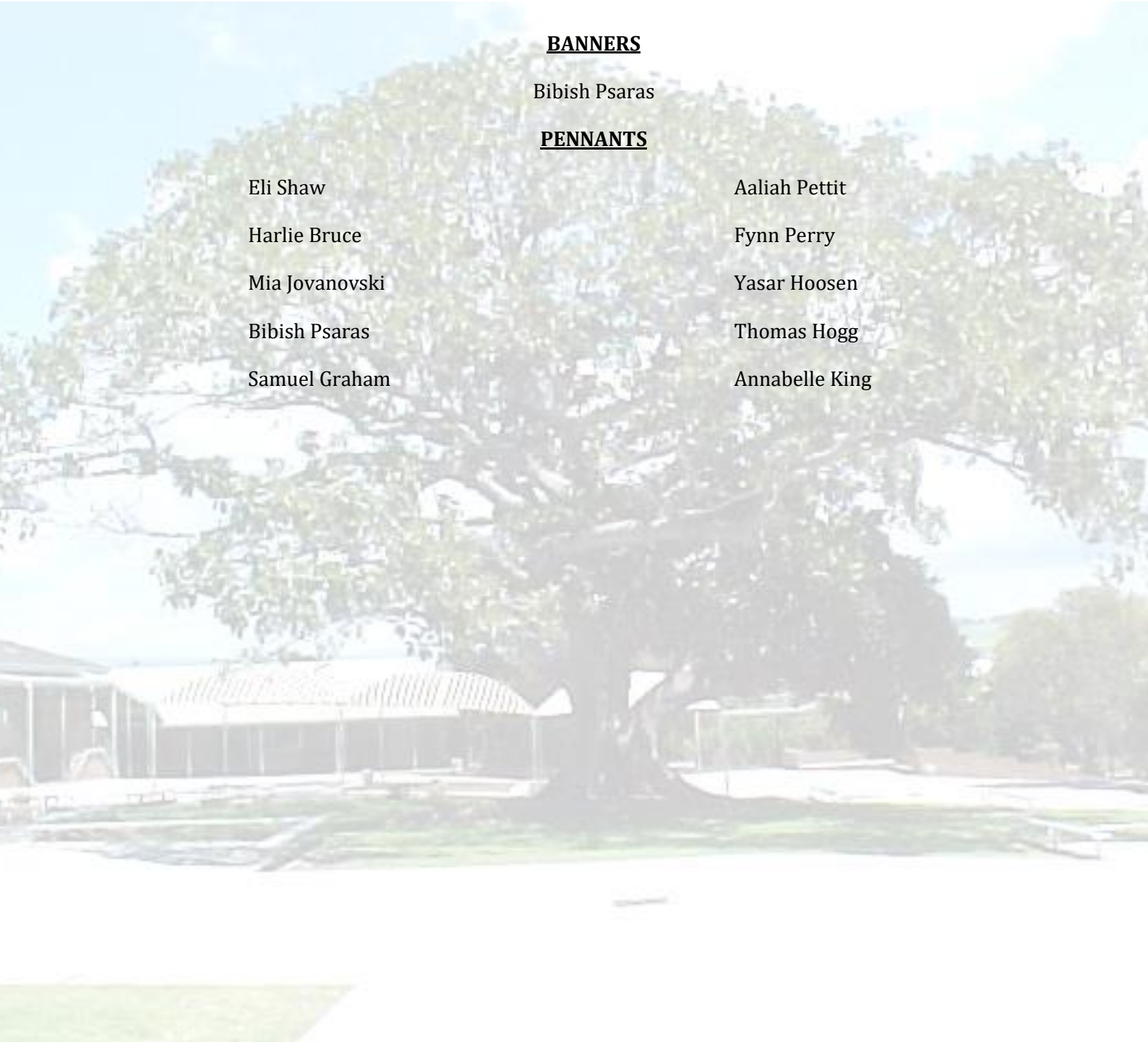
Aaliah Pettit

Fynn Perry

Yasar Hoosen

Thomas Hogg

Annabelle King



Shellharbour Playtime Playgroup

Come and join us for each week for a morning of fun. There will be music, storytime, craft and more!

When: Tuesday mornings 9:30-11:30

Where: Shellharbour Public School Hall

Who: Parents, grandparents, carers and kids age 0-5 years

Cost: First two visits are free, then \$3 per week per family or \$27 per term.





firstnational
REAL ESTATE

Coastside Shellharbour

...will donate **\$500** to your school
when you
List and Sell with us!

First National Coastside...
We put you first



Matt Hutchinson
0423 507 488



Maria Field
0411 306 323



Rachel Hutchinson
0401 850 581



Bonnie Steele
0432 091 548

02 4295 5033

coastsidefn.com.au





Please support our neighbours in Shellharbour Village.....



Directors: Ben Cohen, Amanda Bonnici & Adam McGrath

Ray White Shellharbour (42965233)

Oak Flats (42562000) Group

RACHAEL HARDY

B.Comm, CPA, Registered Tax Agent

- Tax Returns
- Specialising in small business
- Accounting & Bookkeeping services
- Professional Partner of Quicken & MYOB

Rachael Hardy
is a CPA Practice



P. 0421 775 035 by appointment only
E. rachaelhardy@optusnet.com.au



PEAK
SPORTS & LEARNING
Fitness • Education • Fun

CONTACT US



1300 GO PEAK (1300 467 325)



admin@peaksportslearning.com.au



www.peaksportslearning.com.au

Unit 3 106A Industrial Road, Oak Flats NSW 2529

ABN: 86162512487



Dine In Or Takeaway

OPEN 6 DAYS
Wed to Mon
Lunch: 11.30pm - 2.30pm
Dinner: 5.00pm - till late
Tuesday Closed

Ph: (02) 4295 5252
Mob: 0470 434 228



17A/75 Cygnet Ave
Shellharbour City Centre NSW 2529
www.rehalsdivine.com.au



{Dine In or Take Away}

Fully Licensed BYO(wine only)

Ph:(02) 4296 6090
suashan.restaurant@gmail.com
Opening Hours - Tuesday to Sunday
Lunch - 12:00 to 2:00pm
Dinner - 5:00 to 10:30pm

16B Addison Street Shellharbour NSW Australia 2529

CHRIS LOVATT

LICENSED REAL ESTATE AGENT

Mobile: 0414 335 769

Email: chris.lovatt@oneagency.com.au

123 Shellharbour Rd, Warilla NSW 2528
PO Box 467, Warilla NSW 2528

Telephone: 02 4296 5111

Facsimile: 02 4296 5544

www.oneagency.com.au

ONE AGENCY
SOUTHERN DIVISION



Tim Ball

Shop 3, 20-26 Addison St
Shellharbour NSW 2529

superiormeatsonaddison@gmail.com

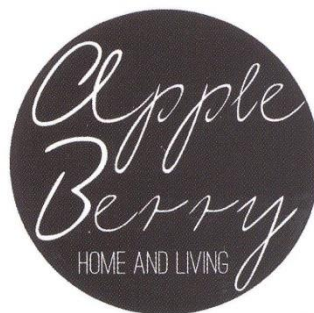
www.facebook.com/superiormeatsonaddison

*Appleberry home and
living
homewares and furniture*

*Mon-Friday 9-5pm
Sat-sun 9.30-4pm*

6/32 Addison street Shellharbour

PH: 42 963790



Sharon Crilly Florist



1/8 Addison Street,
Shellharbour NSW 2529

p (02) 4296 1010 **f** (02) 42967956

e info@shiquefloraldesign.com.au

www.shiquefloraldesign.com.au

Like us on Facebook!



Whitehouse Cafe

P: 02 42 955655
29 Addison St
Shellharbour Village
whitehousecafe@hotmail.com

\$10 and \$15 lunches with free
dessert and coffee/tea

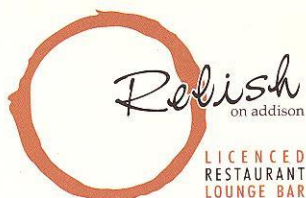
SHELLHARBOUR VILLAGE BAKERY CAFE

*Cakes for All Occasions
Coffee, Pies, Breads*

OPEN 6 DAYS

30b Addison Street
Shellharbour 2529

PH: 02 **4296 5928**
or **0402 382 865**



LICENCED
RESTAURANT
LOUNGE BAR

Tom & Maria Laws

Shop 4, 6 Addison Street
Shellharbour NSW 2529
Telephone (02) 4295 5191
Facsimile (02) 4295 4283
relish@ozemail.com.au

www.relishonaddison.com.au

• breakfast • lunch • dinner •



Shop 7 20-26 Addison Street Shellharbour Village, NSW, 2529

John Brown

M: 0400 955 053
P: 02 4296 1133
E: pacinos.john@gmail.com
W: www.pacinoscafe.com.au

Carree Brown

M: 0488 813 470
P: 02 4296 1133
E: pacinos.carree@gmail.com
F: Pacino's Café Shellharbour



Corner of Mary and Addison Street
Shellharbour Village, NSW

Website: www.shellharboursurf.com.au

Phone: 02 42953373

Email: enquiries@shellharboursurf.com.au

Shop 6, 32 Addison Street Shellharbour NSW, 2529

Doug & Gianna
Managers

28 Mary Street
Shellharbour NSW 2529

tel: 02 4296 9235

fax: 02 4296 8542

eml: info@shellharbourmotel.com.au

www.shellharbourmotel.com.au



A great place to relax!



Shellharbour
Country Kitchen
CAFE

**CAFE
TAKE AWAY
CATERING**

4296 3205

GREAT FOOD - GREAT COFFEE
AT A GREAT LOCATION

Cnr Addison Ave. & Wentworth Streets Shellharbour



Shellharbour
SCUBA Centre
Come dive with the locals



ABN:49 140 950 947




41 Addison Street
SHELLHARBOUR NSW 2529
www.shellharbourscuba.com.au

Ph : 02 4296 4266
Fax: 02 4297 7060
info@shellharbourscuba.com.au



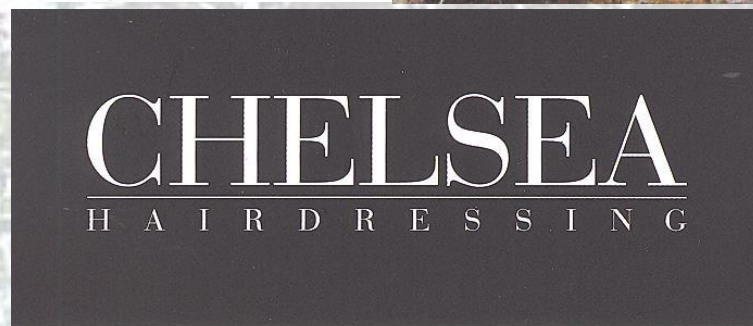
HARBOURVIEW TAKEAWAY

crouchy321@hotmail.com

5 addison st shellharbour village nsw
2529

ABN :91322311416

0242968579



CHELSEA
H A I R D R E S S I N G



EST. 2008

GET ACTIVE

health solutions

» «

DEBBIE BRUCE

FITNESS TRAINER | MASSAGE THERAPIST
NATURAL HEALTH EDUCATOR

0404 142 135

Email: debbiebrucept@live.com.au
www.gaahs.com.au

Insta: [@getactive_healthsolutions](https://www.instagram.com/getactive_healthsolutions)
www.mydoterra.com/getactive

Harn
Thai Restaurant
Authentic Thai Cuisine

28A Mary St
Shellharbour 2529
Ph.(02) 4296 6888
Fax.(02)4296 6590



Open 7 days | Lunch: Sunday-Saturday 11.30am-2.30pm
Dinner: Sunday-Thursday 5.00pm-9.00pm
Friday-Saturday 5.00pm-9.30pm

Liz Shepherd
Branch Manager



78 Central Avenue
Oak Flats NSW 2529

P 02 4256 9511 F 02 4256 9411
M 0478 435 515
E liz.shepherd@bendigoadelaide.com.au

Oak Flats **Community Bank**® Branch

Fluxx
Boutique

Phone: 4295 4398 www.fluxxboutique.com.au
Shop 6/20-26 Addison Street Shellharbour



fluxxboutique



fluxx



JOSIF JOVANOVSKI
ARTISTIC DIRECTOR

Ph: (02) 4297 2891 Mob: 0433 905 612
Email: josif@roo-theatre.com.au Web: www.roo-theatre.com.au

PROUDLY SERVING



SHELLHARBOUR VILLAGE
1/20 ADDISON STREET
4296 8880

KIAMA
142 TERRALONG STREET
4233 2828

BEAN_ROASTED f.COM/BEANROASTED

Bean
Roasted

ESPRESSO BARS

CHRISTIAN LOVATT - OWNER
0419 424 645
CHRISTIANLOVATT@HOTMAIL.COM



HARLOW

DAY SPA

SHOP 1/18 ADDISON ST, SHELLHARBOUR VILLAGE, N.S.W 2529

0435 803 539

www.harlowdayspa.com.au
harlowdayspa@outlook.com

Harlow Day Spa

@harlowdayspa

vintage rose
HAIR BOUTIQUE

Receive 20% off your first style cut and
colour service

valid until 16/09/17

- 42977601 -

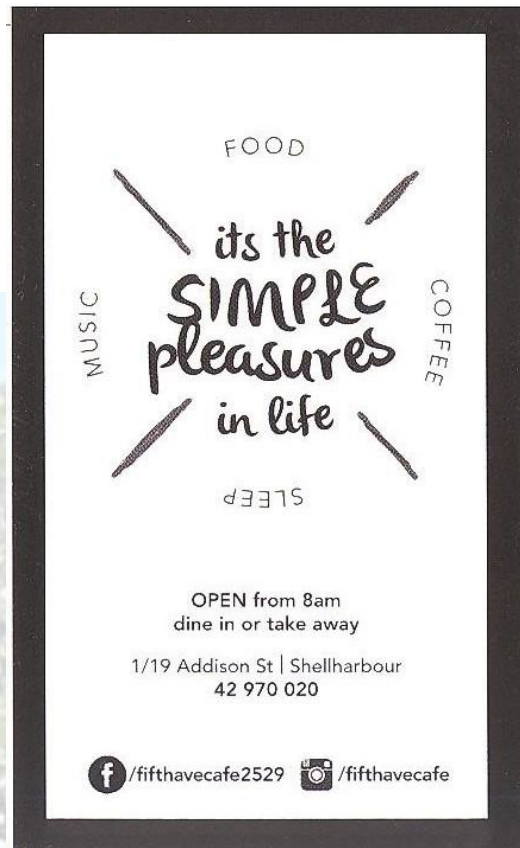
2/20-26 Addison street Shellharbour 2529



@vintagerosehairboutique



Find us on
Facebook



7 Robertson Street
Shellharbour NSW 2529

Scott Sheargold

Director

sheargoldpaint@gmail.com

0414 881 791

www.sheargoldpaint.com

Sheargold Paint & Paper Pty Ltd
ABN: 36 003 326 127 Licence: 39227



Sutherland to Illawarra Regions
Wallpaper Installation
Paint Interior & Exterior
Competitive Rates
Obligation Free Quote
All Work Guraranteed
Fully Insured

SMARTFINANCIAL.com.au

Michael Misiti

CEO/Financial Planner

Jess Boles

Director/Financial Planner

Josh Marley

Director/Financial Planner

Franz Kalchbauer

Director/Financial Planner

Hayley Grayson

Director/Practice Manager

T 4295 3331 • F 4295 3336 • E reception@smartfinancial.com.au

Shellharbour

26b Mary Street
Shellharbour Village NSW 2529
PO Box 4213, Shellharbour NSW 2529

Nowra

2/38 Berry Street,
Nowra NSW 2541
PO Box 1674, Nowra NSW 2541

Australian Unity Financial Adviser of the Year – Eight Years in a Row – 2011 to 2018

By appointment only: Wollongong • Sydney • Southern Highlands

www.smartfinancial.com.au

SMARTFINANCIAL

**Make your finances
work for you.**

Life is long. Plan SMART



**Free Initial consultation, call and book your appointment today on 4295 3331.
26 Mary Street, Shellharbour Village**